

Episode 22

Autumn 2018



Damahwil, p. 9

Summary

♦ Editorial	2
♦ Brokerage News	3
♦ New Construction	11
♦ Ice Yachts Agent	12
♦ Sales Index	14
♦ Racing Index	18
♦ Charter	19
♦ Charter Index	30
♦ Upcoming Events	35
♦ BGYB Contact	36



Photo © James Robinson Taylor



BROKERAGE



RACING



CHARTER

212th Atlantic, p. 3

SALE, CHARTER & MANAGEMENT
Also specialises in Transoceanic charter
www.bernard-gallay.com





Photos © Marc Paris



Photo Richard Sprang

100ft Fino Conq Sloop NOMAD IV, p. 7, 22

Bernard Gallay

The Yacht Market Overview

Sales

While the BGYB Sales department had a calmer period at the beginning of the year, from July to August we have seen an unexpected increase in sales activity and we expect a particularly strong sales period in September and October, especially through events such as the Cannes Yachting Festival and the Monaco Yacht Show.

Looking back on this year first, BGYB had the opportunity to exhibit five sailing yachts at the Palma Superyacht Show 2018 (27th Apr – 1st May): 121^{ft} Ed Dubois Sloop **DAMAHWIL**, 100^{ft} Performance Sloop **NOMAD IV**, 100^{ft} Carbon Sloop **BLUE DIAMOND**, Cruiser Racer Maxi 100 **LEOPARD 3**, and 84^{ft} Fitzroy Sloop **NEPTUNE**. This made it one of BGYB's biggest boat exhibits and is a testimony to the growth of the company.

This season saw some noteworthy sales, for instance the CNB 76 German Frers sloop **MARICEA** and the 90^{ft} Sloop **QUINTA SANTA MARIA**.

The BGYB sales team has adapted to the market by modifying the asking price of certain yachts where appropriate after deliberation with their owners. Some boats who have had important price reductions from this season include the 176^{ft} M/Y displacement yacht **SANSSOUICI STAR**, the 118^{ft} S/Y Ocean Going Motorsailer **QUEEN SOUTH III**, the S/Y Racing Botin 65 **HIGH SPIRIT**, the 84^{ft} S/Y Fitzroy Sloop **NEPTUNE**, the SWS 78 S/Y **SOUTHERN STAR**, the S/Y Ice 62 **SUENO**, and the 100^{ft} S/Y Carbon Sloop **BLUE DIAMOND**.

Looking ahead to the future, there are a number of significant new sales listings that BGYB are excited to showcase in the following fall season. There are three new notable sailing catamaran listings: the Privilege 615 **KANDOR**, the Lagoon 67 **PERLE NOIRE**, and the **GP70**, an exciting new 70^{ft} catamaran built entirely of carbon and based on the plans of renowned architects VPLP. Other new listings include the magnificent and legendary 212^{ft} S/Y William Gardner New Classis Schooner **ATLANTIC**, the 148^{ft} Abeking & Rasmussen M/Y **KRISS**, a motor yacht thoroughly classic in her design, but modern in construction and engineering, the 89^{ft} S/Y **ZURBAGAN**, the M/Y Overmarine 'Mangusta 72' **HALKIN** and, finally, the S/Y Garcia 65 Centreboard Sloop **MARY BLU III**, designed by the famous Berret-Racoupeau architects.

In the upcoming Cannes Yachting Festival (11th – 16th September) the BGYB sales team will be exhibiting three brokerage boats plus a new ICE Yacht. Join us in Cannes at Port Canto to see 100^{ft} S/Y Fino Conq Sloop **NOMAD IV**, 100^{ft} Carbon Sloop **BLUE DIAMOND** and 84^{ft} Aluminium Cutter Sloop **NEPTUNE**, and at Le Vieux Port for the brand-new S/Y **ICE 60**, where BGYB are acting as official Ice Yacht Agents.

We will also be showing off our **NOMAD IV** at the Monaco Yacht Show (26-29 September). She offers a completely new concept of large sailing yacht with a high freeboard, huge beam and sail area allowing her unequalled sailing performances as well as tremendous spaces for the accommodation. She is absolutely astonishing.

BGYB will be attending Les Voiles de St-Tropez (29th September – 7th October) where our brokerage boats 135^{ft} M/Y **OCEAN SAPPHIRE**, 110^{ft} S/Cat Maxi **OCEAN PEARL**, S/Y Racing Farr 52 **FURTIF 2**, S/Y **DAMAHWIL**, S/Y **NOMAD IV**, S/Y **NEPTUNE** and S/Y **LEOPARD 3** will be on display. From our charter fleet 82^{ft} Maxi S/Y **AEGIR** and S/Y Swan 82 **KALLIMA** will be participating in the races while 72^{ft} S/Y **ENTHALPIA** will be available for viewings at anchor together with **OCEAN SAPPHIRE**, **NOMAD IV**, **LEOPARD 3** and **NEPTUNE**. Our 89^{ft} S/Y **WHITEFIN** will also be attending as part of a charter.

We look forward to seeing you there!

Charter

This has been one of our most successful years for the BGYB Charter department having significantly surpassed the number of charter days from last year while our turnover has been record-breaking. Not only were many of our boats almost fully booked for the summer period but we already have several bookings made for this winter – and next summer too! This season has also seen an interesting new type of charter where 100^{ft} S/Ys or even 130^{ft} M/Ys were used as toys and tenders for bigger charters on boats up to 260^{ft}. We look forward to continuing this success over the winter period.

Our 135^{ft} M/Y **OCEAN SAPPHIRE** particularly stood out for its successful charter calendar this season with 11 weeks of back to back bookings across the summer. Her ability to also host 100 guests at port for special events makes her even more attractive and charters have already been confirmed for 2019.

As well as **OCEAN SAPPHIRE**, other notable charter boats to be mentioned are Swan 82 **KALLIMA**, S/Y 100^{ft} **DARK SHADOW**, 82^{ft} Maxi S/Y **AEGIR** and 90^{ft} S/Y **WHITEFIN** who have all had continuous charters throughout the summer.

We have welcomed a wide variety of new boats into our charter fleet, notably Catamaran Ipanema 58 **ARAOK** and 82^{ft} S/Y **IKIGAI**, formerly **ATLANTA**. We have also confirmed charters on the newest members of our fleet such as our bigger M/Ys the 157^{ft} **THE MERCY BOYS** in Croatia and Turkey, as well as the Southern Wind 78 **ELISE WHISPER** in Corsica and Sardinia, 95.5^{ft} S/Y **MARGARET ANN** in the South of France and S/Y Racing Maxi 100 **LEOPARD 3** in the Balearic Islands. Other additions include the Privilege 615 S/Cat **KANDOR**, the jewel in the Alliaura Marine range and racing S/Y Volvo 70 **OCEAN BREEZE** who is available for racing charters.

The Charter team saw a successful open day in Antibes on 1st June where, despite the weather, there was excellent participation and several brokers subsequently booked charters with our fleet thanks to it. We hope to maintain this success at the Cannes Yachting Festival where four boats will be shown including two from the charter fleet: the fantastic 100^{ft} S/Y **NOMAD IV** and 84^{ft} S/Y **NEPTUNE**. Also, for the first time ever, BGYB will be participating in the Monaco Yacht Show with **NOMAD IV**.

Looking ahead to our winter season, we have a number of boats heading to the Caribbean for Christmas and New Year. Two catamarans, the hugely popular Lagoon 620 **MELARNIE** and 60^{ft} S/Y **NO LIMIT** will be joined by Southern Wind 94 **WINDFALL** and 102^{ft} Southern Wind superyacht **FARFALLA**, alongside our latest additions to the fleet S/Y **IKIGAI** and S/Cat **ARAOK**.

In the West Mediterranean meanwhile, boats from our fleet boasting a superb charter history are available for bookings over Christmas and New Year. Our bigger M/Y the 157^{ft} **THE MERCY BOYS** and the 135^{ft} **OCEAN SAPPHIRE** are already seeing interest for this period. For charterers looking for something slightly different 164^{ft} M/Y **HALAS** will be located in the East Mediterranean.

We look forward to a profitable winter season and hope to see the same trends of this season extending throughout the year.

212^{ft} New Classic Schooner ATLANTIC

2010. She is the replica of legendary ATLANTIC which was commissioned in 1903. Her victorious 1905 Transatlantic Race made her immortal in yachting history.

After owning, restoring, rebuilding or recreating a number of famous yachts such as Thendara, Aile Blanche, Borkumriff, Zaca a te Moana and most recently Eleonora, her owner planned his ultimate masterpiece; with her overall length of 64.5 metres she is the largest classic racing schooner ever to be recreated. Above all, she is again breathtakingly beautiful, turning heads wherever the wind takes her.

Her dimensions are simply incredible; overall, she measures a remarkable 64.5 m. Her graceful sheer line and long overhangs accentuate her grace while her waterline length of 42 m and narrow beam are a promise of unmatched speed under sail. Her spars tower some 45 m above the waterline and support a staggering area of 1,750 m² of sail, more than two and a half times that of the already awesome J-Class yachts.

Type:	Classic Yacht
Model:	3-Mast Schooner
Length:	64.5 m
Beam:	8.85 m
Draft:	5.00 m
Material:	Steel
Engine:	YANMAR - 555 kW
Speed:	12 knots
Range:	1,900 nm
Generator:	2
Fuel consumption:	80 L/H
Fuel capacity:	12,000 L
Water capacity:	1,600 L



135ft Sir Norman Foster Design

OCEAN SAPPHIRE



OCEAN SAPPHIRE is a luxury motor yacht designed by world-renowned architect Sir Norman Foster and built by the Italian shipyard **Rodriquez Cantieri Navali**.

She has four deck levels, offering more exterior and interior space than any other yacht in her category.

Special attention has been paid to the quality of light and the views from all areas of the yacht, including the Master suite's two private balconies. The interiors have been furnished with great attention to aesthetics, practically and luxury. Taking advantage of the floor-to-ceiling windows and panoramic views, a sense of continuity between the exterior and interior spaces has been intuitively created.

Year:	2010
Designer:	Foster and Partners
Builder:	Rodriquez Cantieri Navali
Type:	Signature 40 Aluminium Displacement Motor Yacht
Length:	41 metres
Beam:	8.40 metres
Speed:	12 to 16 knots
Number of cabins:	5 for up to 12 guests



175ft Steel/Aluminium Displacement Motor Yacht

SANSSOUCI STAR

1982. A yacht of quality German construction, **SANSSOUCI STAR** is a strong, reliable steel motor yacht with the capacity for transatlantic crossings.

She accommodates up to 20 guests in 9 cabins and up to 12 crew in 6 cabins. She is one of the few yachts of her type still available, and has great potential for family cruising and charter.



148ft Abeking & Rasmussen

KRISS

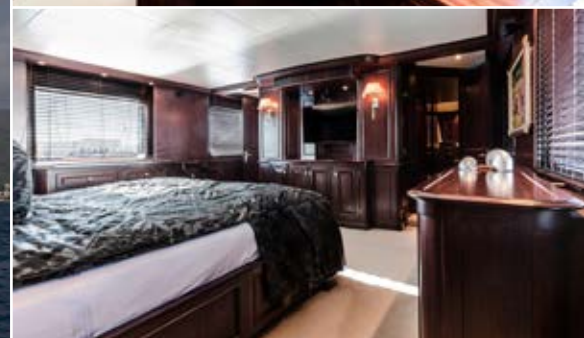
**1974 – Refit 2017.**

KRISS (ex NO LO SE – ex SHARK) is an exciting amalgamation of comfort, luxury and technology. She is thoroughly classic in her design, but modern in construction and engineering.

She features 3-decks, a raked bow and transom stern. Having undergone several major refits (2001 & 2017), almost all that remains of the original yacht are the strong hull and the main engines. She is a true Gentleman's yacht with pedigree, maintained in immaculate turn key condition by the same Captain/Manager since 2000.

KRISS is ready to cruise anywhere in the world. She has more than a transatlantic range capability.

Year built/refit : 1974/2017
Builder : Abeking et Rasmussen
Naval architect : J. H. F. Rogers
Classification : Lloyds
Flag : Malta
Length : 45 m
Beam : 7.47 m
Draft : 3.30 m
Material : Steel
Engine : 2 x 1,050 HP Carterpilard
Speed : 12.5 knots
Range : 4,500 nm
Generator : 2 Carterpilard
Fuel capacity : 57000 L
Water capacity : 12000 L



Exhibited at the
Cannes Yachting Festival 2018



100ft Gilles Vaton Design

BLUE DIAMOND

2004. Fantastic cruiser-racer built of Carbon Fibber. She combines a lifting keel, five-star comfort and high performances, for blue water cruising or on the Super Yacht racing circuit!

Her luxury interior can accommodate up to eight guests in 4 double cabins, around a wide saloon and dinner table, well isolated from the galley and the crew quarters. She offers a safe and protected cockpit, separated from the manoeuvring area, which features an open transom leading to the ocean. The flush deck, sleek lines and powerful rig make for sensational sailing in all conditions!



Photos © Jesus Romero



100ft Super Maxi

LEOPARD 3



Photo © Carlo Borlenghi

2007. Leopard is arguably the most high profile racer cruiser yacht in existence. This speed machine has a history of trophy-hunting and record-breaking around the world and represents a pinnacle in the evolutionary timeline of super maxi development. She is an entirely new species of big boat: a 100-foot yacht that undergoes a stunning metamorphosis between a potent racing machine and a 5-star luxury crewed charter yacht.

The concept behind Leopard was to create a yacht with a radical dual purpose: high performance for racing with a canting keel and twin dagger boards, combined with stunning internal space, accessories and creature comforts to meet the demands of the top-end charter market. The designers excelled in their task and Leopard was launched as the first ever super maxi yacht with this dual role in June 2007.



♦ BROKERAGE NEWS - Sailing Yacht ♦

Exhibited at the Cannes Yachting Festival
& Monaco Yacht Show 2018



100ft Finot Conq Design nomad IV

Photos © Richard Sprang

2013. NOMAD IV is a fantastic sailing yacht, designed by the famous architects Finot Conq. She is a new concept of large sailing yachts with a high freeboard, huge beam and sail area allowing her unequalled sailing performances as well as tremendous spaces for the accommodation.

She is particularly comfortable thanks to her length and her equally large interior and exterior spaces.

Her lateral ballasts mean she can sail almost flat and a lifting keel permits entry into a variety of ports and anchorages. Her large cockpit with 2 tables, each capable of seating up to 12, is ideal for relaxed dinners on board, and the ample sunbathing space permits owners and guests to soak up the rays in total comfort. Her deck saloon has stunning 360° panoramic views.

Also available for charter.

Year built / refit: 2013
Builder: Maxi Dolphin
Naval architect: Finot Conq
Flag: Malta
Length: 30.48 m
Beam: 8.30 m
Draft: 3.50-5.90 m
Material: Carbon
Engine: Yanmar 370CV - 213 Kw
Speed: 10 - 11 knots
Range: 3500 nm
Generator: 2 x Fischer PANDA, 24 Kw
Fuel consumption: 30l/h - engine
 + 20l/h - generator



104ft Aluminium Sloop OCEAN'S SEVEN²



1998. Designed and built for an experienced yachtsman, O7² was destined from the beginning to be a top-notch performer on the water and in the charter market.

She is reportedly the only sailing yacht which has 4 Owner/Guest staterooms which convert from 8 single beds to 4 king-sized beds of 7 foot length. In addition, the two forward staterooms can convert to one large master suite with a center line king bed and his and hers baths.

O7² is in truly superb condition, with numerous important improvements having been made to update her and bring maximum enjoyment to the Owner, Guests and Crew.



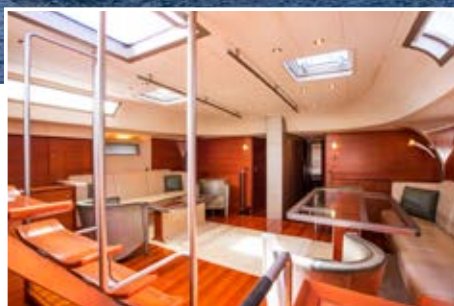
Photos © Rüdiger Grimes Graeme



90ft Garcia Fast Cruiser with lifting keel ZURBAGAN

2006. ZURBAGAN won the SuperYacht design awards when launched in 2007 in the Sail 23m-36m category. Designed by Gilles Vaton and Couedel Hugon Design, she is an outstanding yacht, laid-out for fast cruising.

Her hull as well as her annexes are identical to L'Oreal's (current around the world record holder from East to West), the mast has been moved back allowing to minimize the pitching. ZURBAGAN expresses purity, sobriety and elegance. With her pure lines, a smart form sculpted for speed. A really low canopy and completely uncluttered deck made for competition and fast cruising in total safety and the contemporary interior design offers a very good combination of comfort and performance.



Photos © Stuart Pearce

♦ BROKERAGE NEWS - Sailing Yacht ♦

At anchor at the
Cannes Yachting Festival 2018

121^{ft} Ed Dubois

DAMAHWIL

2010. Fantastic Ed Dubois Design sloop. She is extremely comfortable and a true ocean going sailing yacht.

Her owner sails her with only 2 crew thanks to her very reliable system which makes her extremely seaworthy and easy to manoeuvre. She has not been used heavily and having undergone a complete refit in 2016, she is in spotless condition.

Year built/refit:	2010/2017
Builder:	Manufacturer
Naval architect:	Ed Dubois
Interior designer:	Ed Dubois
Flag:	Cayman Islands
Type:	Sloop
Model:	Sailing Yacht Sloop
Length:	36.98 m
Beam:	8.36 m
Draft:	3.73 m
Material:	Aluminium
Engine:	600 HP Caterpillar
Generator:	Onan
Fuel capacity:	18000 L
Water capacity:	8000 L
Special feature:	Carbon spar refit in 2017 Complete Refit in 2017





118ft Ocean Going Motor Sailer QUEEN SOUTH III

1999 – Refit 2013. QUEEN SOUTH III has a well-equipped interior, featuring high quality wood finishes from Viareggio Italy. Her interior highlights the finest Italian craftsmanship. Her graceful clipper bow and lovely lines belie the capability of this robust blue water cruiser. Equally suitable for worldwide cruising, QUEEN SOUTH III is an excellent yacht for family cruising or yacht charters alike. She has an extensive list of equipment including 2 stabilisers.

This single-family-owned yacht has been consistently maintained to the highest standard. QUEEN SOUTH III underwent a 2-phase complete refit in 2012 and 2013 at Rybovich Spencer Shipyard in Florida and the Hinckley Shipyard in Rhode Island.



Photo © Gary Felloni



84ft Fitzroy Yachts NEPTUNE

2004. Refit 2017. She is now back in turnkey condition and in compliance with the commercial French Registry.

She is a Judel/Vrolijk design built from aluminium and a true long distance sailing yacht with luxurious accommodation and numerous high quality equipment. The spacious accommodation includes a three-guest cabin layout aft, all with ensuite bathrooms. The two forward crew cabins also have separate heads.

The generous main saloon includes a comfortable dining area and lounge. The deckhouse incorporates an additional dining area, chart table and inside steering station.



Photo © Gilles Martin-Pagot

♦ NEW CONSTRUCTION - Sailing Catamaran ♦

GP 70
SAILING YACHT
VPLP
design

New Concept Catamaran for Sale

Order now and get it delivered within 12 months in 2019

The GP70 concept is the ultimate result of the expectation of a long-term experienced yachtsman in catamaran sailing.

The GP 70 is the ideal compromise between performance and comfort to cruise around the world at unmatched average speed and in the safest environment for one's own family.

Thanks to the collaboration with the world-famous multihull architects VPLP design, the GP 70 is the perfect catamaran to be enjoyable to sail in any circumstances, and thrilling to race into the breeze at up to 30 knots!

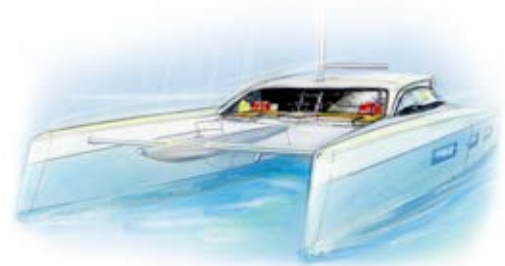
The comfort and the functionality of the accommodation are another priority, and the GP 70 offers a wide and bright saloon with the galley opening to the aft cockpit table, and accommodation for up to 8 guests and 2 crew.

Very well rigged with powerful sails, the GP 70 remains nonetheless accessible to all passionate sailors with a small crew of just two!

The hulls and superstructure are ready to be put together, waiting for you to take the GP 70 over and to adapt her to your own wishes.

Length overall	21.00 m
Beam	9.75 m
Draft	1.45/3.90 m
Displacement	22 t (at full load)
Engines	2 x 80 HP
Hull	Glass Fibber
Superstructure	Carbon Fibber
Main deck, Structure	EU < 24 m
Certification	
Spars	Carbon Fibber
Main Sail	132 m ²
Solent	89 m ²
Staysail	52 m ²
Code 0	190 m ²
Spinnaker	300 m ²
Guests & Crew	8 + 2
Owner's cabin	1
Guest's cabins	2 or 3

Rendering Linea Concept



ICE YACHTS, Italian style meets blue water sailing

Blue Water sailing is a concept that encompasses a real philosophy. The dark deep blue waters are typical of oceans, far from any shelter. ICE YACHTS designs and builds boats to navigate off-shore without limit. Born at CNG, then C.N. Yacht 2000, this premise, that has its origins in the early days of fibreglass and the expertise of its most experienced sailors, was formed at Alpa, one of the

most famous Italian boatyards of all time. Dozens of boats that were built for Blue Water cruising can still be found sailing the seas today; for example the ULDB designed by Bill Lee, or Nastro Azzuro, winner of the Columbus Celebrations in 1992, as well as the latest designs by Vallicelli and Felci.



Voilier exceptionnel construit en carbone/fibre de verre et doté de performances uniques.

FELCI YACHT DESIGN




ICE 33 - ICE 52 - ICE 60 - ICE 72 - ICE 82 - ICE 100 - ICE Cat 61 - ICE Cat 67

ICEYACHTS
INNOVATION
CONFORT
ELEGANCE

Caractéristiques techniques

Longueur hors tout :	15,80 m
Longueur à la flottaison :	14,84 m
Largeur :	4,65 m
Déplacement :	12,80 t
Tirant d'eau :	2,50/2,80 m
Grand voile :	90 m ²
Génois 108% :	67 m ²
Genaker :	300 m ²
Moteur :	75 Cv
Réservoir d'eau :	520 L
Réservoir de gasoil :	350 L
Construction :	Sandwich Verre/Carbone Infusion Epoxy
Mât :	Carbone

 ICE YACHTS s.r.l. - Via delle Arti n° 12 - 26010 Salvirola - Italia - www.iceyachts.it

 ICE YACHTS Agent - Sarl BGYB - 1 rue Barthez - 34000 Montpellier - France - tel. 06 86 67 80 24 - iceyachts@bernard-gallay.com

♦ BGYB official agent for ICE YACHTS ♦



NOMINATED 2018

INNOVATION
CONFORT
ELEGANCE

Un grand 60 pieds construit avec le soin et la qualité d'un 80, doté de la manœuvrabilité d'un 52 et offrant des aménagements avec 3 ou 4 cabines.

Exposé au Yachting Festival Cannes - 11 au 16 septembre 2018



ICE 33 - ICE 52 - ICE 60 - ICE 72 - ICE 82 - ICE 100 - ICE Cat 61 - ICE Cat 67

IceYACHTS

Caractéristiques techniques

Longueur hors tout :	17,99 m
Longueur à la flottaison :	16,80 m
Largeur :	5,20 m
Déplacement :	17,90 t
Tirant d'eau :	2,85 m
Grand voile :	130 m ²
Génois 108% :	90 m ²
Genaker :	320 m ²
Moteur :	150 Cv
Réservoir d'eau :	1000 L
Réservoir de gasoil :	650 L
Construction :	Composite carbone en infusion sous vide
Mât & bôme :	carbone



ICE YACHTS s.r.l. - Via delle Arti n° 12 - 26010 Salvirola - Italie - www.iceyachts.it

ICE YACHTS Agent - Sarl BGYB - 1 rue Barthez - 34000 Montpellier - France - tel. 06 86 67 80 24 - iceyachts@bernard-gallay.com

Multihull



OCEAN PEARL Maxi Catamaran
33.50 m 2000
Location: Barcelona, Spain **2,950,000 €**



PRINCE DE BRETAGNE Ultim 80
24.38 m 2012
Location: Brittany, France **1,200,000 €**



PELICANO YC 80 Jouvert-Nivelt Design
23.95 m 2005
Location: Sète, South of Francey **990,000 €**



TRITIUM 72ft Ultim VI LP Design
23.38 m 2002
Location: California **1,050,000 €**



LORD DICKIE Velum 72
22.00 m 2009, Refit 2018
Location: Port Napoleon, South of France **790,000 €**



PERLE NOIRE Lagoon 67
20.60 m 2006
Location: Barcelona, Spain **1,150,000 €**



ICE CAT 61 *New* Cruising catamaran
18.60 m 2019
Location: Italy **P.O.A.**



GLAZMORE Expedition Power Catamaran
18.60 m 2009
Location: Port Napoleon, South of France **790,000 €**



KANDOR Privilege 615
18.50 m 2007
Location: Sète, South of France **795,000 €**



NO LIMIT Carbon VPLP Design
18.46 m 2015
Location: Bretagne, France **2,300,000 USD**



LAKOTA Orma 60
18.28 m 1990
Location: Philippines **290,000 €**



WAI-HAU Orma 60
18.28 m 1994
Location: Lisbon, Portugal **700,000 €**



AKRON AOTON Orma 60
18.28 m 1998
Location: Greece **450,000 €**



MARANA IV Catana 50
15.20 m 2010
Location: South of France **788,000 €**



ZED 6 TS 42
12.98 m 2015
Location: Canary Islands, then Caribbean **550,000 €**

♦ SALES INDEX ♦

Motor Yacht



SANSSOUCI STAR Steel/Aluminium Large Motor Yacht
53.53 m 1982
Location: Sète, South of France **3,900,000 €**



KRISS Abeking & Rasmussen Built
45.00 m 1974, Refit 2017
Location: Malta or Palma **6,000,000 €**



OCEAN SAPPHIRE Norman Foster Design
41.10 m 2010
Location: Cannes, South of France **5,900,000 €**



DONA DEL MARE New Classic
34.10 m 2006
Location: Croatia **3,200,000 €**



ABOU MAYA Monte Fino 83
25.29 m 1994
Location: Morocco **290,000 €**



PELICANO YC 80 Jouvert-Nivelts Design
23.95 m 2005
Location: Sète, South of France **990,000 €**



HALKIN Mangusta 72
1999
Location: Menton, South France **490,000 €**



GLAZMORE Expedition Power Catamaran
18.60 m 2009
Location: Port Napoleon, South of France **790,000 €**



MISTY New Classic Commuter
15.3 m 2013
Location: France **390,000 €**



Sailing Yacht



THE PEARL Farr Yacht Design Sloop
24.50 m 1996
Location: New Zealand **590,000 €**



WILD SALMON Locwind 80
24.00m 1997
Location: Port Napoleon, South of France **490,000 €**



SOUTHERN STAR SWS 78
23.95m 2004
Location: Montfalcone, Italy **1,600,000 €**



LA FORZA DEL DESTINO Swan 77
23.44 m 1992
Location: East America **US\$ 895,000**



WALLY ONE Wally 83
22.34 m 1991
Location: South of France **1,190,000 €**



FOREST HILL Garcia 70
22.20 m 2002
Location: Agde, South of France **700,000 €**



TARA BAY Scorio 72
21.60 m 1991
Location: Marseille, South France **390,000 €**



MARY BLUE III Garcia Yacht 65
20.13 m 2008
Location: Barcelona, Spain **890,000 €**



KALAO Maxi Dolphin 65 - 2
20.00 m 2003
Location: Antibes, South France **690,000 €**



SUENO ICE 62 with 2 years warranty
18.82 m 2015
Location: Sardinia, Italy **1,150,000 €**



CANTELOUP VIII ICE 62 with 2 years warranty
18.82 m 2014
Location: Les Embiez, South of France **1,150,000 €**



GLAZ Futuna 57
18.00 m 2006
Location: South of France **490,000 €**



NEVER SAY NEVER Beneteau 57
17.60 m 2006
Location: South of France **335,000 €**



LEVITHA Azzuro 53
16.85 m 2007
Location: South of France **590,000 €**



MAQUIS X-50
15.24 m 2007
Location: South of France **420,000 €**

♦ SALES INDEX ♦

Sailing Yacht



ATLANTIC New Classic Schooner Repliqua
64.50 m 2010
Location: Italy P.O.A.



ELEONORA Classic Gaff Schooner
49.50 m 2000, Refit 2008
Location: Spain 7,900,000 €



MARIQUITA William Fife III Design
38.10 m 1911, Refit 2003
Location: Lymington, England 3,500,000 €



DAMAHWIL Ed Dubois Oceangoing Sloop
37.00 m 2010, Refit 2017
Location: La Seyne, South of France 4,995,000 €



QUEEN SOUTH III Oceangoing Ketch
35.97 m 1999, Refit 2013
Location : La Seyne, South of France 1,490,000 €



OCEAN'S SEVEN² Trehard Aluminium Sloop
31.80 m 1998
Location: Marseille, France 1,995,000 €



NOMAD IV Maxi Dolphin
30.48 m 2013
Location: La Seyne, South of France 5,900,000 €



BLUE DIAMOND Bermudian Sloop
30.00 m 2004
Location : Palma, Spain 3,450,000 €



LEOPARD 3 Farr Yacht Design Super Maxi Yacht
30.00 m 2007
Location: Palma, Spain 2,950,000 €



SOUTHERN CROSS Maxi 88 Sloop
29.70 m 1991/2004
Location: Croatia 700,000 €



DARK STAR OF LONDON Aluminium Centre Board Cutter Rig
27.50 m 1982
Location: Port Napoleon, South of France 890,000 €



ZURBAGAN Lifting Keel Sloop
27.40 m 2006
Location: Spain 1,400,000 €



BENIGUET Garcia 86 QR
26.33 m 2005
Location: Port St Louis du Rhône, South of France 1,495,000 €



NEPTUNE Fitzroy Aluminium Sloop
25.65 m 2004, Refit 2017 -
Location : Antibes, South of France 1,790,000 €



DJANGO TOO Trehard Aluminium Sloop
25.00m 1991
Location: La Ciotat, South of France 990,000 €

Racing



OCEAN PEARL Maxi Catamaran
33.50 m 2000
Location: Barcelona, Spain **2,950,000 €**



NOMAD IV Maxi Dolphin
30.48 m 2013
Location: La Seyne, South of France **5,900,000 €**



LEOPARD 3 Farr Yacht Design Super Maxi Yacht
30.00 m 2007
Location: Palma, Spain **2,950,000 €**



PRINCE DE BRETAGNE Ultim 80
4.38 m 2012
Location: Brittany, France **1,200,000 €**



TRITIUM 72ft Ultimate VPLP Design
23.38 m 2002
Location: California **495,000 €**



GREEN DRAGON Volvo 70
21.50 m 2007
Location: Italy **390,000 €**



HIGHT SPIRIT Botin 65
20.00 m 2015
Location: Valencia, Spain **3,150,000 €**



CHESSEA Volvo 60
19.50 m 1997
Location: Sete, South of France **390,000 €**



LAKOTA Orma 60
18.28 m 1990
Location: Philippines **290,000 €**



COME IN VENDEE Ex Imoca 60
18.28 m 1997
Location: West France **139,000 €**



COMPAGNIE DU LIT IMOCA 60
18.28 m 2007
Location: Brittany, France **750,000 €**



WAI-HAU Orma 60
18.28 m 1994
Location: Lisbon, Portugal **700,000 €**



AKRON AOTON Orma 60
18.28 m 1998
Location: Greece **450,000 €**



BOOGALOO Open 50
15.85 m 2007
Location: Brittany, France **345,000 €**



FURTIF² Farr 52 Performance
15.79 m 2002
Location: Toulon, South of France **180,000 €**

Charter

B GYB has successfully developed its charter activity and today we have a selection of some of the world's most magnificent yachts for charter. We have organised both private and corporate charters worldwide and we offer our clients impeccable standards of service.

Classic or contemporary, fast or tranquil, formal or friendly, the BGYB charter team will find you the best yacht for your charter requirements. Once you have decided on the type of charter that you wish to experience, the BGYB charter team will put all their efforts into finding the best yacht and the best destination for your needs.

BGYB assets:

- Identifying and understanding exact requirements.
- Providing numerous choices.
- Suggesting cruising itineraries.
- Corporate Event/ Team Building.
- Delivering the experience.

DESTINATIONS

West Mediterranean

- French Riviera
- Corsica & Sardinia
- Italian Riviera
- Sicily
- Aeolian Islands
- Balearic Islands

East Mediterranean

- Greece
- Croatia
- Montenegro
- Turkey

Caribbean

- Leeward Islands
- Les Antilles
- Windward Islands
- Cuba
- Panama

Pacific Ocean

- Polynesia
- Galapagos Islands
- Fiji
- New Zealand

Indian Ocean

- Maldives
- Seychelles

Other Destinations

- South East Asia
- South America
- Scandinavia
- (Norway, Sweden, Finland)
- Spitzberg
- Iceland
- Greenland

2001/2011 - Length: 23.99 m

Guest/Crew: 7/3

This 80 footer cruiser-racer is suitable both for coastal or blue-water cruises and is the ideal choice for a luxury charter for family and couples.

Built in carbon composite, she stands out for her light displacement which means exciting performance sailing even in light Med breezes.

In 2011 and 2015 she benefited from intensive refits managed by the Southern Wind Customer Care team, including but not limited to: engine, generator and propeller replacement, rigging substitution and upgrading to Carbon EC6+...

Photos © Foto Arcobaleno

SW 78 ELISE WHISPER



82ft JFA IKIGAI

2001/2018 - Length: 25.13 m - Guest/Crew: 6/3

IKIGAI was recently refitted and refurbished at Vitters Shipyard in what was effectively a complete rebuild.

The spacious, modern and welcoming interior is fashioned from clear varnished teak. The large master cabin and two guest cabins are situated forward. Amidships are the spacious saloon and dining room. Behind the companionway you will find, to port, the brand new high-tech navigation station, the chart table and the crew cabin; and to starboard, the galley and crew mess. The transom opens to give access to the garage where the tender is stored. Sailing Ikigai is an absolute joy: sensational to helm, she is simply fantastic upwind.



2018 - Length: 17.80 m - Guest/Crew: 6/3

With its unrivalled living space, intelligent design and dynamic performance, the new Flagship catamaran Ipanema 58 delivers a luxury cruising experience without compromise.

Designed to comfortably share simple day trips or long-haul cruises with family or friends, the Ipanema 58 features a myriad of decadent and spacious areas in which to relax. Host long lazy lunches in the stunning 25m2 cockpit that comfortably accommodates the largest group of guests, and then unwind on the inspired modular sunbathing deck on the catamaran's expansive foredeck.



◆ BGYB FLEET Available in the Caribbean this winter ◆

SW 102RS
FARFALLA

2014 - Length: 31.78 m - Guest/Crew: 8-12/4

Launched in Cape Town in May 2014, FARFALLA is the first Raised Saloon version of the SW 102 model.

Notable features of FARFALLA, which will make her the ideal cruising yacht, include a spacious flush deck, a tender garage for a 4 meter dinghy and a mainsail captive winch. The yacht interior follows Southern Wind Shipyard's most popular layout, with Owner's cabin forward, three guest cabins amid ship and crew quarters aft.



2013 - Length: 28.64 m - Guest/Crew: 8/4

She combines luxury and comfort with cutting edge technology and performance in a way that has rarely been seen before. Performance is clearly at the heart of this yacht but she has an equally impressive cruising comfort. The intelligent and beautiful collaboration between Southern Wind Shipyard, Reichel Pugh and Nauta Design has resulted in a sense of great comfort and security whilst sailing.

SW 94 Windfall, Courtesy of Southern Wind Shipyard

SW 94
WINDFALLLagoon 620
MELARNIE

Photo © Le Studio photo

2017 - Length: 18.90 m - Guest/Crew: 8/3

Designed by renowned architects Van Peteghem and Lauriot Prévost (VPLP) in association with the Lagoon shipyard, the 620 is an innovative catamaran designed to suit the needs of yachtsmen looking for a relaxing cruise in the most luxurious of surroundings.

MELARNIE is a completely new Lagoon 620, set apart from her sister ships by her sleek light grey hull and matching dark grey and graphite theme. She has a large bimini to provide shade and plenty of sunlounger cushions.



2015 - Length: 18.29 m - Guest/Crew: 6/2

Built by Outremer Yachting, NO LIMIT is a completely new 18m sailing catamaran. Although her design is that of a racing catamaran, NO LIMIT is also the ideal yacht for a relaxed and comfortable luxury cruise. She has the capacity to sail at high speeds, but is a favourite in the charter market due to her uniqueness. Thanks to the intelligent usage of space and the minimalist layout of the deck and cockpit, guests are able to enjoy spacious living and cruising areas.

Photo © Julez 2015

Outremer 5X
NO LIMIT

Mega Motor Yacht

THE MERCY BOYS



Luxury Motor Yacht THE MERCY BOYS was built in 1986 by the Shipyard Schweers and then entirely refitted in 2008.

Lloyds classed and MCA compliant, her stylish interior was designed by John Munford and can accommodate up to 12 guests with a master stateroom, 2 double staterooms and 2 twin staterooms with 2 pullman beds.

The first true 'Expedition Yacht', she offers the opportunity to explore the world in comfort and safety. She is one of the most seaworthy yachts of her size, is full of character and offers unparalleled deck and dining space with 3 dining locations, a disco / entertainment area and a vast array of watersports equipment.

Year: **1986, Refit 2008**

Designer: **Gerhard Gilgenast**

Builder: **Fr. Schweers Shipyard**

Interior designer: **John Munford**

Type: **Mega Motor Yacht**

Length: **49.00 metres**

Beam: **9.20 metres**

Speed: **13.5 knots**

Cabins: **5 for up to 12 guests**

Crew: **11**

Engine: **MAK 1700 Kw**



Photo © Kristina Strobel

135^{ft} Motor Yacht

OCEAN SAPPHIRE



This new private luxury yacht, designed by Norman Foster, has four deck levels, offering more exterior and interior space than any other yacht in her category.

Special attention has been paid to the quality of light and aspect with all major areas of the yacht, including the master suite's two private balconies which benefit from spectacular forward-facing views.

The interiors have been furnished with great attention to aesthetics, practicality and luxury. Taking advantage of the floor-to-ceiling windows and panoramic views, a sense of continuity between the outside and the interior spaces has been intuitively created.

Now authorised to welcome up to 100 guests at quay!

The perfect yacht for hosting during events in the South of France such as the Cannes Film Festival and the Monaco Grand Prix.

Photos © Nigel Young/Foster + Partners



Year: 2010

Designer: **Foster and Partners**

Builder: **Rodriguez Cantieri Navali**

Type: **Signature 40 Aluminium**

Displacement Motor Yacht

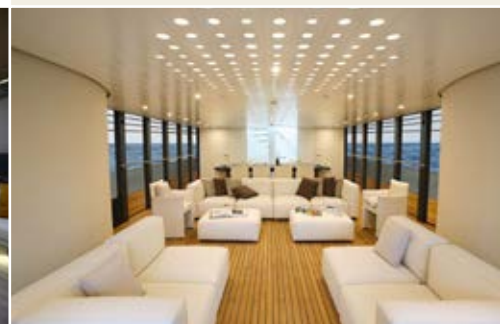
Length: **41 metres**

Beam: **8.40 metres**

Speed: **12 to 16 knots**

Number of cabins: **5 for up to 12 guests**

Crew: **7**





100' Super Maxi
LEOPARD 3

2007 - Length: **30.00 m** - Guest/Crew: **8/4**
Winner of the Maxi Yacht Cup and the Voiles de St Tropez in 2016, the mighty LEOPARD 3 will be available for racing charters for this year's events again and the Rolex Middle Sea Race!

She also have a long history of sailing records: Transatlantic New York to Lizard in 2008, Cape Town to Rio Race in 2009, Round the Island Race in 2013, Transatlantic Superyacht & Maxi Regatta in 2012!

Last chance to experience her astonishing performances, as she is coming on the sale market now!



2013 - Length: **30.48 m** - Guest/Crew: **12/4**
NOMAD IV is a sailing yacht with cutting-edge characteristics that set her apart from other 100 footers today. She is probably the fastest 100' performance cruiser in the world, as well as being a very comfortable yacht for luxury family charter. NOMAD IV accommodates 12 guests sleeping on board in one master cabin, 2 guest cabins with double beds, one cabin with twin beds (bunk beds) and one quadruple cabin with a large double bed and 2 twin beds (bunk beds). Each cabin has an ensuite bathroom.

Photos © Richard Sprang



Maxi Dolphin FC100
nomad iv



Wally Yachts
DARK SHADOW

2002 - Length: **30.45 m** - Guest/Crew: **6/5**

Wally yacht DARK SHADOW is a 30 m (100') high-performance cruising yacht that is instantly recognizable with her sleek lines and her pure, contemporary design.

This makes her one of the most sought after yachts on the regatta circuit with her impressive racing pedigree and Wally credentials. However, DARK SHADOW is just as capable at being the ideal charter for a family holiday as she easily converts into a comfortable and relaxing cruising yacht. This flexibility, matched with her stunning interior, has made her an extremely popular vessel for any sort of charter.

Photos © Marc Paris



Maxi-yacht 82
AEGIR

2010 - Length: **25.10 m** - Guest/Crew: **7/3**

AEGIR, the 82 feet Maxi-Yacht built by Carbon Ocean, is a comfortable and luxurious cruiser capable of transforming into a weapon on the race track.

Light, strong, fast and sharp on the water, she can also turn into an ideal blue water cruising yacht, offering excellent comfort and all the amenities of high standard sailing style, with 2 double cabins forward and one triple cabin with single beds, a large saloon, a comfy cockpit table for up to 8 guests and a large sunbed area on an open transom.

Finishing 1st in IRC 1 at the Palma Vela Regatta in 2017, AEGIR has proven once again her full potential on the Maxi Racing Circuit!

Photo © Blueprod

◆ BGYB CHARTER FLEET ◆



Expedition sailing yacht
DWINGER

Photos © Richard Spring

2012 - Length: **48.50 m** - Guest/Crew: **11/7**
157ft DWINGER is unique; a magnificent, innovative sailing yacht built by Royal Huisman. Such is her stability and seaworthiness that she is capable in sailing in a variety of waters, and she has just returned from a season in the Far North. Her customised interior includes a galley which lies open to the dining area allowing the chef to put on a culinary show for the guests each day, while the extensive



outside covered spaces provide plentiful scope for events on board. She can welcome 10 guests in 5 ensuite double cabins.

2004 - Length: **29.15m** - Guest/Crew: **8/4**

Margaret Ann is a 95.5 foot sailing yacht capable of comfortably sleeping up to 12 passengers as well as the crew.

This yacht is in pristine condition. It has a full complement of electronics and equipment for cruising globally in luxury and absolute comfort. Its history of Atlantic crossings and cruising both European waters and the Caribbean are a testament to its true pedigree, with the highest build quality and optimum design.



Pendennis 95
MARGARET ANN



Classic Yacht
WHITEFIN

Photos © Amy North

1983 - Length: **27.43 m** - Guest/Crew: **8/4**

WHITEFIN was designed by Californian Bruce King. The result is an exquisitely proportioned mix of agility, lightness and grace. Whitefin was given a complete refitting in January 2015.

The centre of life on board is the open space area in the wider part of the boat which includes the galley, partially recessed, the nav station, the bar and the saloon with fireplace and piano.

The boat layout consists of four cabins: the owner suite, all aft; the VIP guest cabin with a queen size bed and two guest cabins, with two single beds each.



2004 - Length: **25.65 m** - Guest/Crew: **7/4**

Neptune is a stunning aluminum sloop of Judel/Vrolijk design. The spacious accommodation includes a three guest cabin layout aft, all with private en suite bathrooms. The two forward crew cabins also have separate bathrooms. The large main saloon includes a comfortable dining area and lounge. The deckhouse incorporates an additional dining area, chart table and inside steering station.

Photos © Gilles Martin-Raget



84ft Sloop
NEPTUNE





Swan 82
KALLIMA

2001 - Length: 24.89 m - Guest/Crew: 8/3

The Swan 82 Kallima (Ex Alpina) is an updated model of the Maxi-cruiser concept.

She is the result of accumulated knowledge and experience, drawn afresh. The vessel is a modern sailing yacht which has been built for speed, yet retains the company's high standards and style: elegant lines, luxurious interiors, ease of handling and reliability. Her streamlined hull and practical deck layout mask a



comfortable interior and a wealth of technology, which combine to offer outstanding long range cruising performance. Complete refit in 2018!

1995 - Length: 24.00 m - Guest/Crew: 6/3

Exceptional and relentless sailing yacht.

One of the first and finest WALLY designs with pure German Frers lines. Not only is she high-performing, but is also capable of welcoming guests with all possible luxuries.

WALLY Tender, 'The Lamp' is also available for charter with the yacht upon request.

Wally 77
GENIE

Photos © Gilles Martin-Raget



SW 78
SOUTHERN STAR

Photo © Bluebird

2004 - Length: 23.95m - Guest/Crew: 6/3

Southern Star displays slippery hull lines, a fin and bulb keel, a high aspect ratio and balanced rudder.

She is an exceedingly well rounded yacht, which demonstrates high performance cruising but uses simple sailing systems, free from unnecessary technology. She is the ideal cruiser-racer. Perfect for both relaxing blue water cruises and for competitive racing. (SOUTHERN STAR came fifth place in the Barcelona Race 2005 and

first place in the Boat International Superyacht Race in 2008).



1991 - Length: 25.30 m - Guest/Crew: 8/3

WALLY ONE is the first ever Wally Yacht. As has been the case with each Wally Yacht, the design was very ahead of its time when it was launched in 1991, and revolutionised the Superyacht World.

This 83ft fast sloop is perfect for charter, with abundant flush-deck space, crew quarters aft, comfortable open cockpit. In 2009 and 2013-14, WALLY ONE benefited from major interior and exterior refits. This mythical charming yacht can welcome up to 8 guests.

Wally 83
WALLY ONE

Photo © Bluebird



◆ BGYB CHARTER FLEET ◆

Maxi Catamaran MAGIC CAT



1996 - Length: 25.00 m - Guest/Crew: 8/4

Sailing catamaran MAGIC CAT isn't just any mass-produced yacht. MAGIC CAT's performances are well known by the experienced sailors. This catamaran was designed by Gilles Oliver and built by the Multiplast Shipyard, where the fastest racing catamarans on the planet, "ORANGE 2" and "GROUPAMA 3", were also constructed! MAGIC CAT will captivate sailing enthusiasts, who will be charmed and surprised by the sensations at the helm. The design and refined style of MAGIC CAT will delight you; her comfort, stability and safety will guarantee you will feel at ease on board.

Photos © Eric Pinel



Cruising catamaran CURANTA CRIDHE



2011 - Length: 15.40 m - Guest/Crew: 6/2

Curanta Cridhe (Gaelic for Braveheart) is a custom-built catamaran by Dixon Yacht Design.

Fully air-conditioned, this 50-foot luxury yacht boasts three cabins, each equipped with an en-suite bathroom, a desk/vanity area and lots of storage. With a Queen master and two King cabins (which can also be configured as singles) Curanta Cridhe is ready to welcome you, your family and friends to a luxurious and comfortable home-away-from-home.



2007/2017 - Length: 18.50 m - Guest/Crew: 8/2

Comfort in its purest form; the Privilege 615 is the jewel in the Alliaura Marine range. Designed by Marc Lombard, she is all that one could dream of in a long distance cruising catamaran. Aesthetically pleasing, seaworthy and well thought out. KANDOR is in perfect condition and ready to set sail for the Oceans once more.

There is room for 8 guests in 4 spacious cabins – 1 master bedroom, 2 doubles and 1 twin – all with private en suites, and she is equipped with fun family toys such as snorkeling gear, fishing equipment and a wakeboard.



Privilege 615 KANDOR





Aluminium ketch
ENTHALPIA

1992/2015 - Length: **21.60 m** - Guest/Crew: **8/3**

She was built in 1992 by the Garcia Shipyards and designed by Philippe Harlé, whose reputation is long established in the world of sailing yachts.

ENTHALPIA is characterised by several points: her exceptional sailing qualities; an extremely agreeable and comfortable interior layout furnished with traditional varnished woodwork; and the sense of great comfort on board.

ENTHALPIA is a centerboarder, meaning she can take you to wonderful places unknown of and out of bounds to other yachts.

Photo © Blueprod



2012 - Length: **22.40 m** - Guest/Crew: **6/2**

Luxury cruising and racing on an open 60 naval architecture concept.

The luxury yacht DREAM 67 SHAMLOR stands out thanks to her superior performance, a result of the extremely high-quality construction standards upheld by her shipbuilder Maxi Dolphin. Like a luxury fast car, equipped with the best racing engines, wheels and systems, SHAMLOR boasts the latest technologies, meticulous engineering, and constant attention to economizing on weight throughout the project.

Photo © Blueprod

Narcira 67
SHAMLOR



ICE 62
CANTELOUP VIII



2014 - Length: **18.82 m** - Guest/Crew: **6/2**

CANTELOUP VIII is the ideal yacht for those in search of a true sailing experience, whatever the conditions, without compromising the comfort of a luxury cruise due to her modern and spacious interior.

She will give you the desire to cruise fast and far, either upwind or downwind, or relaxing in a small, isolated bay, thanks to her adjustable keel allowing access

Photo © Blueprod



to shallow waters and tiny typical Mediterranean ports.

2013 - Length: **18.35 m** - Guest/Crew: **6/2**

SUD is a high performance yacht, light and powerful, made for those in search of an exciting sailing experience.

She is very quick and balanced, with sleek lines, she has a very comfortable, chic and modern interior, in pure traditional Italian style! She accommodates 6 sleeping, in 3 double cabins, and up to 16 people for regattas!

Photo © Francesco Ferri

Mylius 60
SUD



♦ RACING CHARTER ♦

Racing events

Alongside our normal charter activity, we also specialize in Racing Charters on a wide range of classic and modern sailing yachts, and superyachts for events such as the Saint Barths Bucket, the Maxi Yacht Cup in Porto Cervo and Les Voiles de Saint-Tropez.

Certain yachts are also available for offshore races including the Rolex Middle Sea Race, the RORC Caribbean 600 and the Maxi Transatlantic Race.

For each event and each class there is a range of different racing yachts to satisfy your requirements : the exclusive Wally & Gentleman Class, the Majestic Classics, and the uncompromised Extrem racing yachts and multihulls.

Racing is about passion for sailing, competitiveness and teamwork but, above all, pleasure.



2015 - Length: 20 m

The 65-foot sailing yacht BOTIN 65 is a truly unique racing yacht with a functional, stylish interior.

She was built by Spanish shipyard King Marine and launched at the end of 2015. There were no costs spared in building this magnificent racer, from her design and construction to the addition of B&G Electronics, VMG, Cariboni Carbon, Aramare Ropes, Southern Spars and much more. During the winter of 2015, HIGH SPIRIT was prepared for regattas and the mast configuration, rigging set up and sails were optimised. She now has a stable heading in any wind and easily hydroplanes in 10 knots.



Botin 65
HIGH SPIRIT



77ft Racing Trimaran
ULTIM EMOTION

2001 - Length: 23.38 m - Guest/Crew: 12/3

This is the first and only time that such a unique maxi trimaran can be privately chartered either for day sailing, regattas and team building. ULTIM EMOTION will also be available to compete in a host of prestigious racing events throughout the year, including the Caribbean RORC 600, Rolex FASTNET, Rolex Middle Sea Race, RORC Transatlantic Race, Les Voiles de St Tropez and numerous others.

Volvo open 70
OCEAN BREEZE



2008/2011/2018 - Length: 21.50 m

Ocean Breeze is a former Volvo Ocean Race boat that came in 3rd in the 2008-2009 VOR. At that time called "Telefonica Blue", the boat sailed under the Spanish flag with Dutch Skipper Bouwe Bekking. After reaching 3rd place in that turbulent Volvo Ocean Race the boat was sold to an Irish/Chinese Team. The boat has undergone a total refit in 2011. The "Ocean Breeze" is now widely used. For example, you can sail for a day as a unique experience for your relationships, staff or guests.

Photo © Laurens Morel

Motor Yacht

Winter 2018 Charter Rates (MYBA terms)



Name: CHRISTINA O Length: 99.13 m
Guest/Crew: 34/38 Area: Caribbean
Rate (high/low): 630,000 €/week



O'MEGA 82.50 m
30/28 Caribbean/South America
480,000/450,000 €/week



TITANIA 73.00 m
12/20 West Mediterranean
630,000/490,000 USD/week



SERENITY 72.00 m
30/30 Arabian Gulf, Indian Ocean, Red Sea
480,000/450,000 €/week



SHERAKHAN 69.65 m
26-28/19 West Mediterranean
425,000 €/week



LIGHT HOLIC 60.00 m
12-15 Caribbean
360,000/320,000 €/week



SANSSOUCI STAR 53.50 m
12/8 West & East Mediterranean
70,000 €/week



BROADWATER 50.29 m
12/12 Caribbean
280,000/260,000 USD/week



HALAS 50.00 m
24/17 Turkey
122,500/108,500 €/week



AMARULA SUN 50.00 m
12/9 Bahamas, Florida and Caribbean
230,000/195,000 USD/week



MOSAIQUE 49.90 m
12/12 West Mediterranean
180,000/160,000 €/week



EXUMA 49.90 m
9/9 Caribbean
189,000 €/week



THE MERCY BOYS 48.60 m
12/11 West & East Mediterranean
106,250/93,750 €/week



HANSE EXPLORER 47.76 m
12/14 Antarctica, South America
145,000/125,000 €/week



EXCELLENCE 45.72 m
12/9 Bahamas
160,000/145,000 USD/week

♦ CHARTER INDEX ♦

Winter 2018 Charter Rates (MYBA terms)

TATIANA 44.88 m
12/9 East Mediterranean
165,000/150,000 €/week



COSTA MAGNA 44.50 m
10/8 West Mediterranean
96,000/90,000 €/week



DIANE 43.00 m
10/8 Spain, Balearic Islands
154,000/133,000 €/week



BINA 43.25 m
12/9 West Mediterranean
175,000/150,000 USD/week



DAYDREAM 42.60 m
10/7 Norway
99,000 €/week



DE LISLE III 42.00 m
9/7 Australia, Fiji, South Pacific
125,000 USD/week



OCEAN SAPPHIRE 41.00 m
12/7 West Mediterranean
110,000/90,000 €/week



DHAANKAN'BAA 40.00 m
14/19 Maldives
85,000/75,000 USD/week



W 39.62 m
10/7 Bahamas, Florida
140,000/130,000 USD/week



SWEET ESCAPE 39.62 m
12/8 Bahamas
115,000/95,000 €/week



LIBERTAS 39.60 m
12/7 East Mediterranean
120,000/100,000 €/week



AZALEA 38.75 m
18/13 Maldives
69,000/59,000 €/week



MAYAMA 37.00 m
10/6 Mediterranean
99,000/85,000 €/week



PARIS A 35.00 m
12/6 East Mediterranean
73,000/63,000 €/week



LADY EMMA 34.10 m
8/4 West Mediterranean
72,000/69,000 €/week

Sailing Yacht

Winter 2018 Charter Rates (MYBA terms)



Name: DRUMBEAT Length: 53.00 m
Guest/Crew: 11/10 Area: New Zealand
Rate (high/low): 175,000 USD/week



TRINAKRIA 49.06 m
10/8 West Mediterranean
80,000/70,000 €/week



DWINGER 48.50 m
11/7 Balearics, Spain
70,000/75,000 €/week



HYPERION 47.42 m
6/8 Caribbean
112,000/91,000 USD/week



HEUREKA 45.00 m
6/6 Mediterranean
93,500/82,500 €/week



VAIMITI 39.20 m
8/5 Mediterranean
65,000 €/week



TWILIGHT 38.10 m
8/6 Mediterranean and the Caribbean
80,000/70,000 USD/week



BLISS 37.00 m
10/5 Mediterranean
75,000/67,000 €/week



WHISPER 35.36 m
6/5 Wint.: Caribbean, Sum.: New England
65,000/55,000 USD/week



MOONBEAM IV 35.00 m
6/6 West Mediterranean
48,000 €/week



CHE 34.70 m
8/5 West Mediterranean
79,000/70,000 €/week



THALIMA 33.70 m
10/5 West Mediterranean
64,000/58,000 €/week



AMADEUS 33.50 m
12/6 Greece
42,500/38,500 €/week



FARFALLA 31.78 m
8/5 Caribbean
70,000 €/week



XNOI 30.65 m
10/4 West Mediterranean
60,000/55,000 €/week

♦ CHARTER INDEX ♦

Winter 2018 Charter Rates (MYBA terms)

NOMAD IV 30.48 m
12/4 East/West Mediterranean
56,000/52,000 €/week



DARK SHADOW 30.45 m
6/5 West Mediterranean
45,000/40,000 €/week



FAR & WIDE 30.20 m
8/4 East/West Mediterranean
50,000/46,000 €/week



LEOPARD 30.00 m
8/5 West Mediterranean
48,000 €/week



MARGARET ANN 29.10 m
8/4 West Mediterranean
40,000/37,000 €/week



GRAND BLEU VINTAGE 29.00 m
8/4 West Mediterranean
43,000/39,000 €/week



WINDFALL 28.64 m
8/4 Caribbean/West Mediterranean
45,000/40,000 €/week



WHITEFIN 27.43 m
8/4 West & East Mediterranean
28,500/25,500 €/week



VINTAGE 1 27.00 m
8/3 West Mediterranean
19,500/17,500 €/week



NEPTUNE 25.65 m
7/4 West Mediterranean
24,000/18,500 €/week



WALLY ONE 25.30 m
8/3 West Mediterranean
24,000/18,000 €/week



IKIGAI 25.13 m
6/3 Caribbean/Mediterranean
32,000/28,000 €/week



AEGIR 25.10 m
7/3 West Mediterranean
32,000/27,000 €/week



MAGIC CAT 25.00 m
8/4 West Mediterranean
35,000 €/week



DJANGO TOO 24.98 m
8/3 West Mediterranean
25,000 €/week



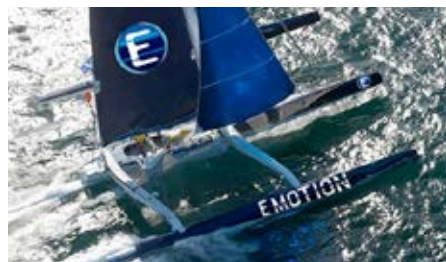
GENIE 24.00 m
6/3 West Mediterranean
25,000/20,000 €/week



SKIP'N BOU 24.00 m
6/3 Mediterranean
28,000/24,000 €/week



SOUTHERN STAR 23.95 m
6/3 West Mediterranean
25,000 €/week



ULTIM EMOTION 23.40 m
6-12/2 West Mediterranean
35,000 €/week



SHAMLOL 22.40 m
6/2 West Mediterranean
19,000/17,500 €/week



ARAGON 22.00 m
6/2 West Mediterranean
35,000 €/week



ENTHALPIA 21.60 m
8/3 East/West Mediterranean
15,500/12,500 €/week



OCEAN BREEZE 21.34 m
Upon request West Mediterranean
48,000 €/week



MELARNIE 18.90 m
8/3 Caribbean/West Mediterranean
28,000/26,000 €/week



CANTELOUP VIII 18.82 m
6/2 West Mediterranean
16,000 €/week



SUD II 18.35 m
6/2 West Mediterranean
20,000/18,000 €/week



NO LIMIT 18.30 m
6/2 Caribbean
18,000/16,000 €/week



AKRON AOOTON 18.28 m
6/3 Greece
P.O.A



ARAOK 17.80 m
8/2 West Mediterranean & Caribbean
24,000 €/week



CURANTA CRIDHE 15.30 m
6/2 West Mediterranean
15,000/14,000 €/week

♦ UPCOMING EVENTS ♦

★ Cannes Yachting Festival 11–16th September 2018

The Cannes Yacht Show takes place every September in the elegant and luxurious surroundings of the sparkling waters of Cannes bay. As the first show in the boating season, this show is Europe's leading in-water yachting event. The major players in pleasure yachting come here to launch their show season in style by showcasing their new worldwide models. With 530 exhibitors, 630 boats and over 51 000 visitors, this promises to be an unforgettable event.

Exhibitors and visitors meet in two exceptional French Riviera ports: "The Vieux Port" and "The Port Pierre Canto", with the boats being displayed both in water and on land in these two locations. The shipyards offer trips out to sea so that new buyers can try out the finest yachts in the world. Yachting lovers from every continent will appreciate the magical atmosphere and unrivalled opportunities for boat viewing that are provided by this show.

This year BGYB will exhibit: • Port Canto (Brokerage) : NOMAD IV, BLUE DIAMOND and NEPTUNE • Le Vieux Port (New boats) : ICE 60



★ Monaco Yacht Show 26–29th September 2018

Set in the iconic Port Hercules of the Principality of Monaco since 1991, the Monaco Yacht Show is the only place to admire, visit and purchase around 125 extraordinary one-off superyachts built by the world's most respected shipyards. 40 new launches are unveiled in world premiere at every edition.

With 580 exhibiting companies and partners participating in the Monaco Yacht Show, the discerning yacht-lover will discover, amongst the world leading luxury yachting companies, the trendiest superyacht builders, yacht designers, luxury manufacturers and the most important brokerage houses.

The Monaco Yacht Show is the one and only occasion in the year - and in the world - to discover the greatest superyachts on offer in the unrivalled glamour of Monaco.

This year BGYB will exhibit NOMAD IV

★ Les Voiles de Saint-Tropez 29th September – 07th October 2018

Les Voiles de Saint Tropez is the major sailing event of the year; an unmissable highlight of the race calendar that is masterfully orchestrated by the Société Nautique de Saint-Tropez for a selection of the finest traditional and modern yachts in the world, combining a subtle mix of latest generation yachts and those dating back to well over a hundred years, as well as bankable names and new additions to the fleet.

A number of top-flight skippers and racers, from the offshore racing scene to the America's Cup, will be competing in Saint-Tropez. Among the many stars will be Sébastien Josse, Philippe Monnet, Marc Pajot, Bruno Peyron, Lionel Péan and Marie Tabarly, to name but a few, all brought together by their love of beautiful yachts, classic and modern alike, and their delight in seeing such a variety of yachts being sailed together in such an atmosphere of fair play and conviviality.



A Cocktail Evening with BGYB 03th October 2018

The BGYB team is delighted to announce a cocktail evening to be held at the Hotel de Lices in Saint-Tropez on the evening of the 03th of October 2017 from 6.00pm to 9.00pm.

Please join us for a small get-together in order to catch up on this week's exciting racing exploits over a glass of wine, a cocktail or two and some canapés.

Visit & Sea Trials

BGYB invites you to make an appointment for a visit or sea trial on board the following yachts which will be based in the bay of St Tropez all week:

Kallima, Whitefin, Genie, Aegir, Enthalpia, Dark Shadow, Ocean Sapphire, Leopard 3, Furtif 2 and Ultim Emotion

We look forward to receiving you on board these one-of-a-kind yachts!



► FRANCE

Montpellier, Head Office



Bernard GALLAY - CEO
+33 (0)6 86 67 80 24 - bernard.gallay@bernard-gallay.com
• Founded the company in 1994, MYBA Member since 1996
• Experienced skipper: 2 Vendée Globe in 1992 & 2000
• America's Cup in 1986/1987



Bruno GALLIEN - Broker
+33 (0)6 82 11 96 00 - bruno.gallien@bernard-gallay.com
• Yacht broker with BGYB since 1999



Lisa SPILLER - Charter Manager
+33 (0)6 33 42 45 09 - lisa.spiller@bernard-gallay.com
• Charter Manager with BGYB since 2007
• MYBA Individual member since 2011



Paris
François BOUCHER - +33 (0)6 82 83 19 21
paris@bernard-gallay.com
• Yacht Broker with BGYB since 2008
• Ocean racer skipper & Yacht captain for years
• Project manager for custom yacht construction



La Ciotat
Stéphane DELLA - +33 (0)6 82 79 08 61
la.ciotat@bernard-gallay.com
• Yacht broker with BGYB since 2013
• Extensively well known and experienced Technical, Fleet, Shore & Project Manager with companies such as Nahema, Compositeworks France, CIM shipyard and several Turkish shipyards



Nicolas MARCHAND - Sales Manager
+33 (0)6 83 47 01 96 - nicolas.marchand@bernard-gallay.com
• Yacht broker with BGYB since 2006
• Yacht Manager & Cannes University Lecturer (Yachting)
• Experienced sailor: Mini Transat 2005, Jacques Vabre 2007, 5 Mini Fastnet double handed Race



Audrey Lucas - Brokerage assistant
+33 (0)4 67 66 39 93 - assistant@bernard-gallay.com
• Brokerage Assistant for Head Office, Montpellier
• Manages the listings, specifications and viewings



Charlotte Ring - Charter assistant
+33 (0)4 67 66 39 93 - charter@bernard-gallay.com
• Charter Assistant for Head Office, Montpellier



Antibes
Youri LOOF - Yacht Broker
+33 (0)6 88 96 11 50 - youri.loof@bernard-gallay.com
• Yacht Captain for 10 years on Swan, Royal Huisman & Alloy Yachts
• BGYB Sales & Charter Broker since 2014

► MONACO



Philippe MONNET - +33 609 01 97 84
monaco@bernard-gallay.com
• For the last 4 years, he has managed the Roxy sailing yacht with his Posséidon team for the Vendée Globe
• Yacht construction consultant
• Extremely wide ranging experience and expertise in the sector

► MOSCOW



Oscar KONYUKHOV - +7 910 477 09 70
russia@bernard-gallay.com
• BGYB representative in Moscow since 2007
• Over all – 3 Round the world campaigns as a Project Manager and PR officer

► TURKEY



Thierry SAGNES - +90 536 976 24 38
thierry.sagnes@bernard-gallay.com
• On the water sailing the 5 ocean since 1982
• 2001 to 2011 Arctic journey project manager and captain on JFA 85 "SUN TENAREZE"



Christophe APOTHELOZ - +90 530 461 50 95
christophe.apotheloz@bernard-gallay.com
• Active Captain on Large Motor Yachts since 16 years (MCA Master 3000 GT Unlimited) and at sea since 1991 - 20 years experience in East Med and Turkish yachting market, charter

► PALMA DE MALLORCA



Jean-Yves CANDLOT - +34 619 05 64 19
palma@bernard-gallay.com
• BGYB representative in Palma since 2008
• With over 26 years of sail and motor yacht navigation experience



Morgane CANDLOT - +34 619 05 64 19
palma@bernard-gallay.com
• Studied International Management for 4 years
• Yacht Agent since 2015

► HONG-KONG



Thierry BAROT - +852 9549 5135
asia@bernard-gallay.com
• BGYB representative in Hong-Kong since 2008
• Service manager for Simpson Marine in HK
• Construction Management of Cortenzo 26M in China at DHS shipyard

► GRENADA



Richard SZYJAN - +1 473 439 4495
grenada@bernard-gallay.com
• Multi and monohull racer
• Sailmaker and rigger since 1991
• Owns Turbulence Ltd in Grenada, Caribbean.

► USA - California



Sylvain BARIELLE - +1 510 872 6894
california@bernard-gallay.com
• Sails maker in San Francisco
• He has participated in several America's Cup Events

► ITALY



Andrea CARACCI - +39 335 763 90 77
andrea.caracci@bernard-gallay.com

► SWITZERLAND



Patricia JACQUOD (Schmidt Yachting)
+41 76 340 37 57
switzerland@bernard-gallay.com

BERNARD GALLAY YACHT BROKERAGE

France (Head Office): Montpellier - 1, rue Barthez - 34000 Montpellier
Tel +33 467 66 39 93 - info@bernard-gallay.com